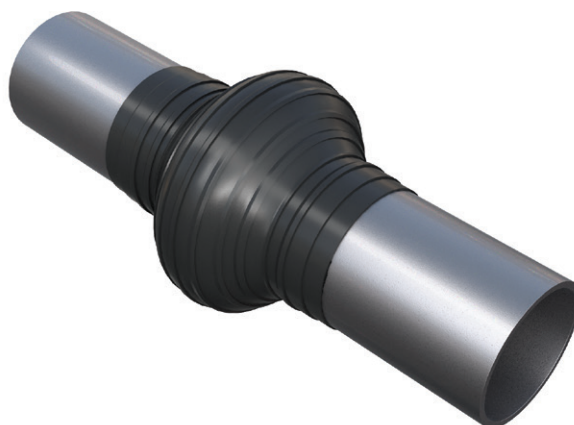


APPLICATION GUIDE

These application instructions outline the correct application of Denso products for P2 specifications for the protection of ferrous pipes, joints and fittings within the water industry.



SCOPE

These application instructions are prepared by Winn & Coales (Denso) Ltd in accordance with 'Civil Engineering Specification for the Water Industry – 7th Edition.'

EQUIPMENT AND TRAINING

- Wire brush for surface preparation.
- Brushes required for the application of Denso Primer D™.
- PPE must be worn in accordance with the manufacturer's recommendations as set out in the Safety Data Sheets.

No special training is normally required for applicators. It is recommended that the applicators are competent in general building practices.

COMPONENTS (IN SEQUENCE OF APPLICATION)

1. Denso Primer D™
2. Denso™ Profiling Mastic
3. Densoclad™ Tape

IMPORTANT:

Winn & Coales (Denso) Ltd pursue a policy to develop and continually improve all of our products and therefore information given in this data sheet is intended as a general guide and does not constitute a warranty, specification or risk assessment. These guidelines may not cover all circumstances; however, our sales personnel are committed to assisting the user in establishing the suitability of the product for its intended purpose and additional specific information, including Safety Data Sheets, is available on request. We recommend that installation is carried out with due regard to Health and Safety and in accordance with relevant local statutes and regulations. Any conflict between these guidelines and the specific project specifications must be resolved by the user before work commences. All rights reserved.

1. SURFACE PREPARATION

Clean the joint and adjacent pipe thoroughly so that they are free from loose scale, rust, dirt etc.

Ensure the joint and adjacent pipe are as dry as possible before the application of the system.

2. METHOD OF APPLICATION

Using a brush apply Denso Primer D™ to the joint and surrounding pipe making sure all surfaces are covered with a thin continuous coating. Allow to dry.

3. DENSO PROFILING MASTIC

Once the primer is touch dry apply Denso™ Profiling Mastic, working into all hollows and voids to create a smooth contour for tape wrapping.

4. DENSACLAD TAPE

Next spirally wrap Densoclad™ with tension making sure a 55% overlap is achieved which ensures a double wrap at all areas. Be sure to start from the middle of the joint, complete a circumferential wrap and continue wrapping towards the pipe on one side and then repeat on the other side.

Smooth out all air pockets and wrinkles.

On each side of the joint or fitting the tape shall extend along 150mm of the barrel of the pipe

